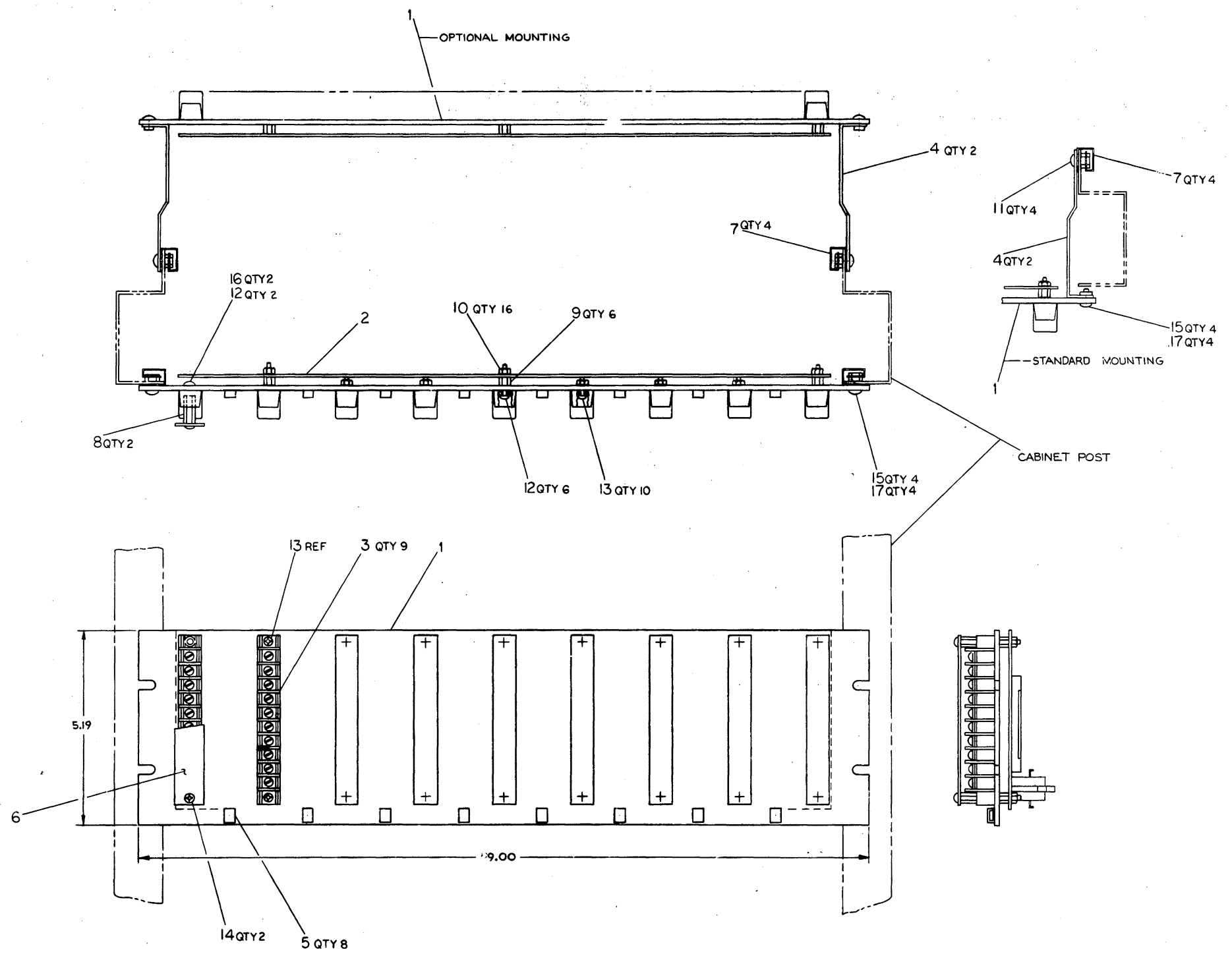






THIS DRAWING AND INFORMATION HEREON ARE THE PROPERTY OF THE UNITED STATES GOVERNMENT AND SHALL REMAIN THE PROPERTY OF THE UNITED STATES GOVERNMENT IN WHOLE OR IN PART AT ALL TIMES AND THE MANUFACTURE THEREOF IS PROHIBITED WITHOUT EXPRESS WRITTEN PERMISSION OF THE UNITED STATES GOVERNMENT.

NOTES:  
1. HAND SOLDER 90 PINS TO PLATED THROUGH HOLE. APPLY HEAT TO PINS.



QTY.	DESCRIPTION	PART NO.	REV.
4	WASHER EXT. TOOTH LOCK #6	9007651	17
2	WASHER INT. TOOTH LOCK #6	9006633	16
4	SCREW, TRUSS, BLK #0-32x.50	9007653-3	15
2	SCREW, PHLPN #6-32x.25	9006020-1	14
10	SCREW, PHLPN #6-32x.50	9006024-1	13
8	SCREW, PHLPN #6-32x.81	9008037-1	12
4	SCREW, TRUSS #0-32x.50	9006073-3	11
16	NUT, KEPS #6-32	9008185	10
6	SPACER, .25 AF #6x.25L6	9006841	9
2	SPACER, .25 AF #6x.75L6	9006859	8
4	NUT, SPEED #10-32	9007786	7
1	SHIELD	B-MD-7411894-0-0	6
8	MOUNT, CABLE TIE	9007867	5
2	BRKT., PANEL SWITCH	C-IA-7411486-0-0	4
9	TERM. BLOCK, 10 PIN	A-PS-1210376-4	3
1	BOARD ASSY	D-C3-5411062-0-1	2
1	PANEL, DISTRIBUTION	D-MD-7411893-0-0	1

FIRST USED ON OPTION/MODEL		H322	
DIMENSIONAL TOLERANCE		UNLESS OTHERWISE SPECIFIED	
MILLIMETERS	FRACTIONS	ANGLES	PLACES
±.15	±.005	±.05	±.005
±.30	±.010	±.10	±.010
±.45	±.015	±.15	±.015
±.60	±.020	±.20	±.020
±.75	±.025	±.25	±.025
±.90	±.030	±.30	±.030
±1.05	±.035	±.35	±.035
±1.20	±.040	±.40	±.040
±1.35	±.045	±.45	±.045
±1.50	±.050	±.50	±.050
±1.65	±.055	±.55	±.055
±1.80	±.060	±.60	±.060
±1.95	±.065	±.65	±.065
±2.10	±.070	±.70	±.070
±2.25	±.075	±.75	±.075
±2.40	±.080	±.80	±.080
±2.55	±.085	±.85	±.085
±2.70	±.090	±.90	±.090
±2.85	±.095	±.95	±.095
±3.00	±.100	±1.00	±.100
±3.15	±.105	±1.05	±.105
±3.30	±.110	±1.10	±.110
±3.45	±.115	±1.15	±.115
±3.60	±.120	±1.20	±.120
±3.75	±.125	±1.25	±.125
±3.90	±.130	±1.30	±.130
±4.05	±.135	±1.35	±.135
±4.20	±.140	±1.40	±.140
±4.35	±.145	±1.45	±.145
±4.50	±.150	±1.50	±.150
±4.65	±.155	±1.55	±.155
±4.80	±.160	±1.60	±.160
±4.95	±.165	±1.65	±.165
±5.10	±.170	±1.70	±.170
±5.25	±.175	±1.75	±.175
±5.40	±.180	±1.80	±.180
±5.55	±.185	±1.85	±.185
±5.70	±.190	±1.90	±.190
±5.85	±.195	±1.95	±.195
±6.00	±.200	±2.00	±.200
±6.15	±.205	±2.05	±.205
±6.30	±.210	±2.10	±.210
±6.45	±.215	±2.15	±.215
±6.60	±.220	±2.20	±.220
±6.75	±.225	±2.25	±.225
±6.90	±.230	±2.30	±.230
±7.05	±.235	±2.35	±.235
±7.20	±.240	±2.40	±.240
±7.35	±.245	±2.45	±.245
±7.50	±.250	±2.50	±.250
±7.65	±.255	±2.55	±.255
±7.80	±.260	±2.60	±.260
±7.95	±.265	±2.65	±.265
±8.10	±.270	±2.70	±.270
±8.25	±.275	±2.75	±.275
±8.40	±.280	±2.80	±.280
±8.55	±.285	±2.85	±.285
±8.70	±.290	±2.90	±.290
±8.85	±.295	±2.95	±.295
±9.00	±.300	±3.00	±.300

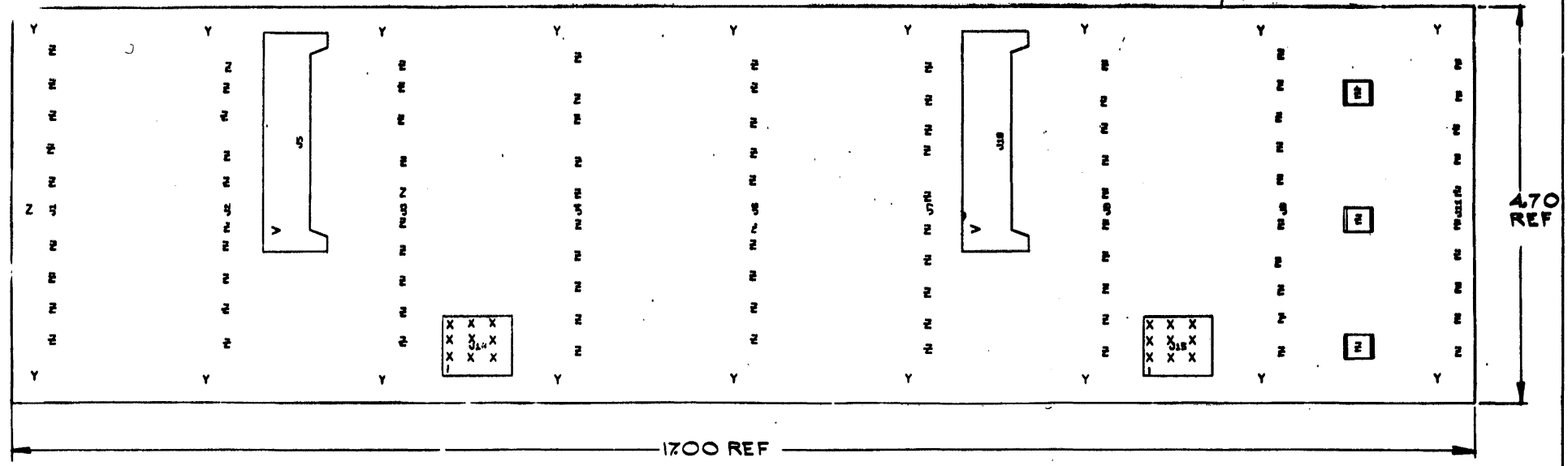
DISTRIBUTION PANEL ASS'Y

B-DD-H322-0 E JA H322-0-0


THIS DRAWING IS THE PROPERTY OF DIGITAL EQUIPMENT CORPORATION. IT IS TO BE USED ONLY FOR THE PROJECT AND QUANTITY SPECIFIED ON THE ORDER. IT IS NOT TO BE REPRODUCED OR COPIED IN ANY MANNER WITHOUT THE WRITTEN PERMISSION OF DIGITAL EQUIPMENT CORPORATION.

**NOTES:**

REP	X-Y COORDINATE HO. LOCATION	K-CO-541062-0-1	1
REP	ASSY/DRILLING HOLE LAYOUT	D-AH-541062-0-5	2
REP	MODULE ECO HISTORY	B-MH-541062-0-6	3
1	ETCHED CIRCUIT BOARD	5011061	4
2	J5, J10	40 PIN BERG CONNECTOR	1209941-00
2	J15, J16	CONN. MATE-N-LOCK 9 PIN	1209350-09
1B	SOCKET, PIN	1209456	7
3	TAB, FA <sup>00</sup> ON 41290	9007113	8
3	EYELET, GS4-5	9009000	9



IC TYPE	GND	+5V
GND AND 5V ARE USUALLY PIN 7 AND 14 RESPECTIVELY EXCEPTS ARE STATED ABOVE		
IC PIN LOCATIONS		

QTY	REF. DESIGNATION	DESCRIPTION	PART NO.	ITEM NO.
PARTS LIST				
ETCH BOARD REV. D				
DRN	R. Beasley	DATE	8-16-74	 TITLE <b>H322 ETCH BOARD</b>
CHK'D	S. Linn	DATE	9-16-74	
ENG	W. Smith	DATE	7/2/74	
PRD. ENG.	R. Johnson	DATE	2/2/75	
FRY	W. Hall	DATE	9-11-74	
NEXT HIGHER ASSY				
B-DD-H322-0				
DEC NO.	EIA NO.	DEC NO.	EIA NO.	SCALE
SEMICONDUCTOR CONVERSION CHART				
SHEET 1 OF 2				
SIZE CODE NUMBER REV.				
D CS 541062-0-1 C				

D CS 541062-0-1 C 4





